



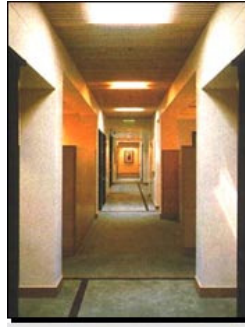
Salehi Engineering, Inc.

Relevant Experience/Office Buildings



- Sempra Energy (Murrieta Base Facility, CA)
- Palm Court Business Park (Victorville, CA)
 - Office Building [Single Story] 41,000 sq ft.
 - Office Building [Two Story] 60,000 sq ft.
 - Tenant Improvement 470,000 sq ft.
- Fletcher Building [6 stories] (San Diego, CA)
- Samuel Fox Building [6 stories] (San Diego, CA)
- The Crossroads Mission Valley [6 stories] (San Diego, CA)
- Carroll Ridge Business Park (San Diego, CA)
- Optimal Integrated Solution (Carlsbad, CA)
- Forged Metal Office Building (Fontana, CA)
- Caliteck (Carlsbad, CA)
- St. Mary's Parish Office Building (San Diego, CA)
- Sea View Executive Plaza (San Diego, CA)
- 350 Ash Office Building (San Diego, CA)
- Sapper Office Building (San Diego, CA)
- 805 Corporate Center (San Diego, CA)
- Pacific Center Buildings 8 and 9 (San Diego, CA)
- Klawiter Executive Plaza (Encinitas, CA)
- Montegna Office Building (Chula Vista, CA)

Relevant Experience/Office Buildings (Cont'd)



- Red Hawk Business Park (Temecula, CA)
- San Diego True View Imaging (San Diego, CA)
- Teradyne Poway Administration Office Building (Poway, CA)
- Pacific Center Office (Carlsbad, CA)
- San Diego National Bank (Vista, CA)
- Morgan Stanley (Rancho Santa Fe, CA)
- Eskilson Real Estate Office (San Diego, CA)
- Far West Industries (Newport Beach, CA)
- Melrose Building (Los Angeles, CA)
- Mario Portillo Office Space (Lemon Grove, CA)
- Wilco Investments Inc., Lot G (Vista, CA)
- El Camino Memorial Park Office Building (San Diego, CA)
- Mission Valley Office Building (San Diego, CA)
- Regents Court Office Building (La Jolla, CA)